

**ENVIRONMENTAL IMPACT ASSESSMENT AND
MANAGEMENT PROGRAMME AND WATER USE
LICENSE APPLICATION PROCESS - THE
PROPOSED HEAT RECOVERY PLANT (110MW)
AND COKING COAL PLANT (3Mtpa) ON THE
FARMS BOAS 642 MS AND MARTHA 185 MS
WITHIN THE MAKHADO LOCAL
MUNICIPALITY, VHEMBE DISTRICT LIMPOPO -
KINETIC MINING DEVELOPMENT SOUTH
AFRICA (PTY) LTD**

PUBLIC PARTICIPATION MEETING

27TH SEPTEMBER 2025

AGENDA

Meeting Agenda

1. Opening and Welcome
2. Apologies and Introductions
3. Purpose of Meeting -
 - a. Introduction of Consultant - Gudani Consulting
 - b. Applicants Details - Kinetic Development Group Limited
T/A Kinetic Mining Development - South Africa (Pty) Ltd
 - c. Overview of the Proposed Projects
 - 3 million tons/year coke plant;
 - Heat recovery electricity power plant - 110 MW;
 - Associated Infrastructure.
4. Description of EIA/EMP/AEL/IWULA Process
 - a. Field Investigations for Environmental Specialists and EAP
 - b. Public Participation Process and Meetings
5. Questions and Answers
6. Closure and Way Forward

PROJECT DESCRIPTION

Kinetic mining Development - South Africa (Pty) Ltd proposes to develop and construct a new coke plant (3 million tons/year) and heat recovery plant (110 MW), offices and living facilities and associated infrastructure.

The proposed industrial and metallurgical activities will be on the farms: Remaining Extent of Boas 642 MS - (Option 1) and Remaining Extent of Martha 185 MT - (Option 2) situated within Makhado Local Municipality, Vhembe District Municipality, in Limpopo Province.

PROJECT DESCRIPTION

Applicant Name:	Proposed Activity Description:		Farms:
Kinetic Mining Development South Africa (Pty) Ltd	3 million <u>tons</u> /year coke plant; Heat recovery electricity power plant - 110 MW;		Remaining Extent of Boas 642 MS - Option 1 Remaining Extent of Martha 185 MT - Option 2
Applicable Listed Activities in terms of NEMA EIA Regulations 2014	GNR.983	GNR.984	GNR.985
	9, 10, 28, 56	4, 6, 15, 21	12
Applicable Water Uses in terms of Section 21 of the National Water, 1998	Section 21(a); 21(b); 21(e); 21(g); and 21(h).		
Applicable Activities in terms of NEMA Waste Act, 2008	GNR. 921 - Category B - Activity 7 and 9		
Applicable Activities in terms of NEMA Air Quality Act, 2004	Listed Activity Category 2 - Sub-Category 2.2 Listed Activity Category 3 - Sub-Category 3.2 Listed Activity Category 5 - Sub-Category 5.1		

PROJECT LOCALITY



Client : Kinetic Mining Development - South Africa

Title : Locality Map

Legend

- Regional Roads
- National Roads
- District Roads
- Major Rivers
- Vhembe District Municipality
- Makhado Local Municipality
- Proposed Kinetic HRCP - Site 1
- Proposed Kinetic HRCP - Site 2
- Farm Portions
- Parent Farms
- Village/Township

Kilometers
0 1 2 4 6 8

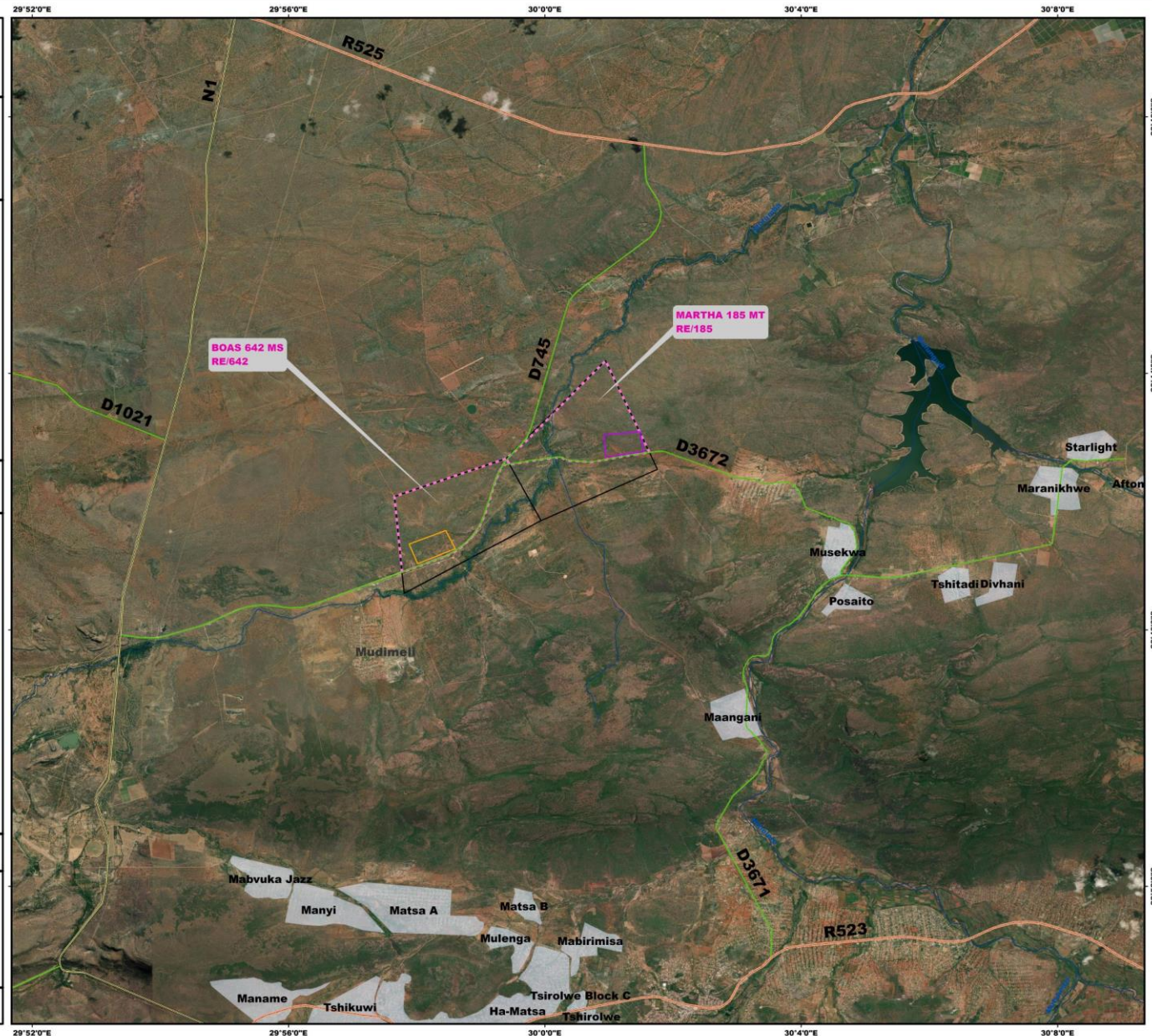


Date: August 2025

1:50 000

gudaniconsulting
ENVIRONMENTAL & SOCIAL SCIENTISTS
37A Voortrekker Street, Polokwane, 0699
P.O. Box 714, Faunapark, Polokwane, 0787
Tel: +2715 - 291 3620 / 291 5669
Fax: +2715 - 291 4932 / 086-235 9820
Cell: +2782 - 828 3412
setenane@gudaniconsulting.co.za

WGS84 Datum



PROJECT LOCALITY



Client : Kinetic Mining Development - South Africa

Title : Locality Map

Legend

- Regional Roads
- National Roads
- District Roads
- Major Rivers
- Vhembe District Municipality
- Makhado Local Municipality
- Proposed Kinetic HRCP - Site 1
- Proposed Kinetic HRCP - Site 2
- Farm Portions
- Parent Farms
- Village/Township

Kilometers
0 1 2 4 6 8

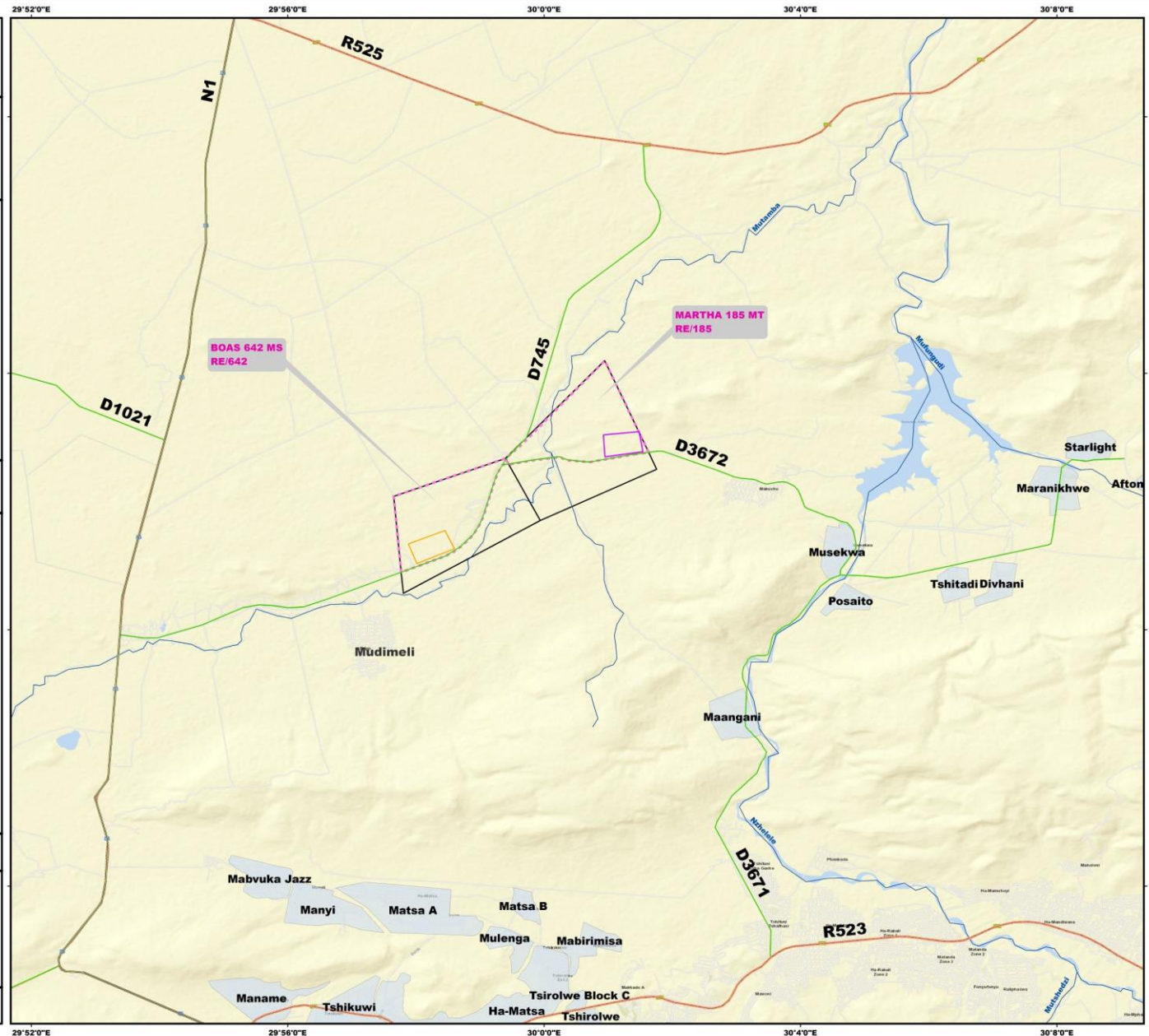


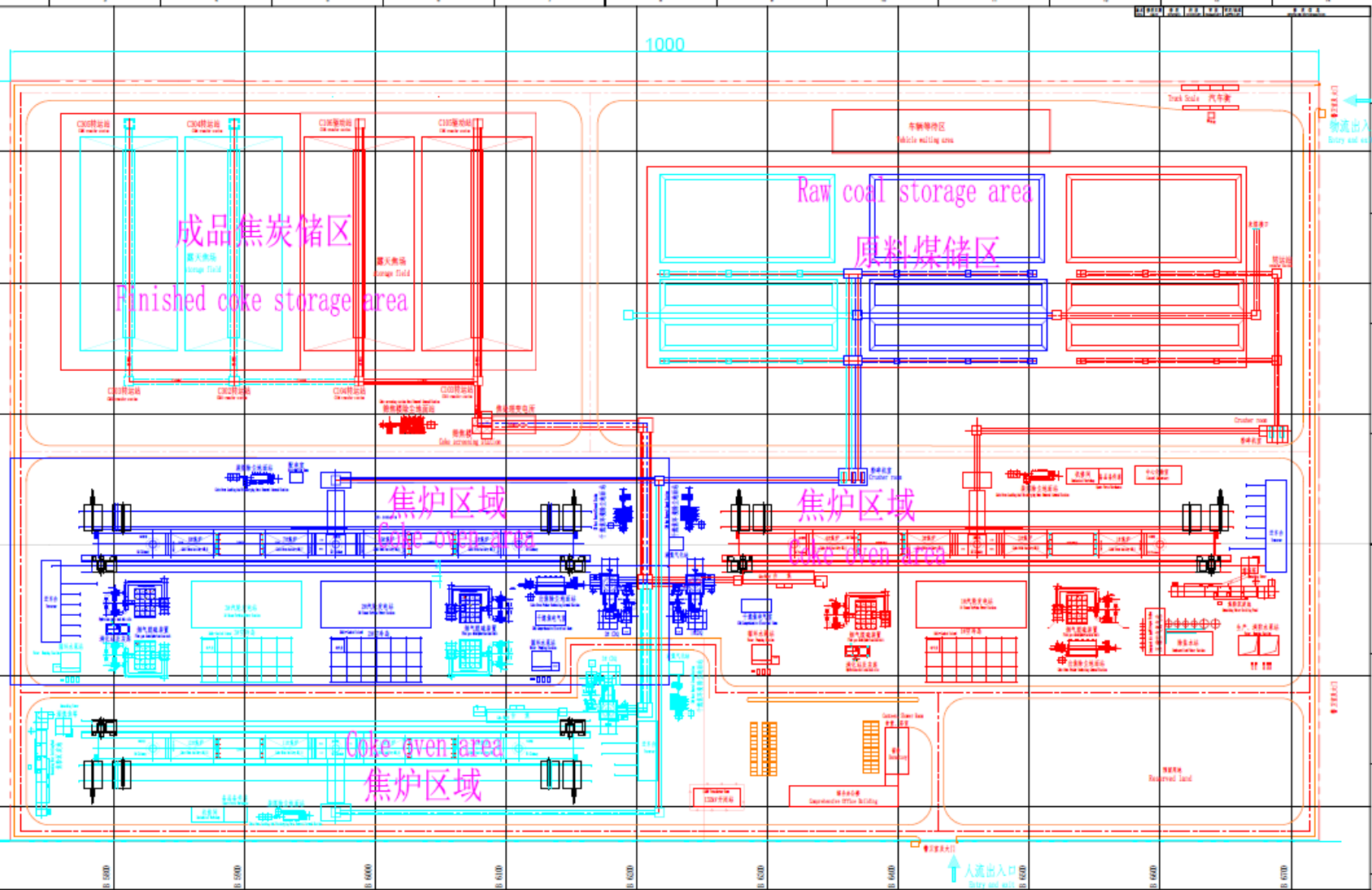
Date: August 2025

1:50 000

gudaniconsulting
ENVIRONMENTAL & SOCIAL SCIENTISTS
37A Voortrekker Street, Polokwane, 0699
P.O. Box 714, Faunapark, Polokwane, 0787
Tel: +2715 - 291 3620/291 5669
Fax: +2715 - 291 4932 / 086-235 9820
Cell: +2782 - 828 3412
Email: setenane@gudaniconsulting.co.za

WGS84 Datum





总图运输主要技术经济指标表

序号	项目名称	单位	数量	备注
1	工业用地面积	m ²	580000	一期用地面积: 428700 m ²
2	道路及回车场面积	m ²	66300	二期用地面积: 87480 m ²
3	绿化用地率	%	15	三期用地面积: 63620 m ²
4	绿化用地面积	m ²	72325	

General map transport main technical and economic indicators table

序号	Project	Unit	Number	Remark
1	Project land area	m ²	580000	Phase I Project land area: 428700 m ²
2	Road & Return yard area	m ²	66300	Phase I Project land area: 87480 m ²
3	Green land rate	%	15	Phase I Project land area: 63620 m ²
4	Green land area	m ²	72325	

图例 Legend

	一期设计地(构)筑物	Phase I designed building(contract)
	二期设计地(构)筑物	Phase II designed building(contract)
	三期设计地(构)筑物	Phase III designed building(contract)
	新设计的道路	newly designed road
	二期用地界限	Project land limit

说明:

1. 图中坐标系统为假定坐标系统。
2. 图中数字计量单位除注明者外均以 m 计。

Explain:

1. Design according to the electronic topographic map provided by Party A and the designated location.
2. The numerical units of measurement in the figure are measured in m unless indicated.

设计单位	设计人	审核人	批准人
设计日期	设计日期	审核日期	批准日期
设计比例	设计比例	审核比例	批准比例
设计比例	设计比例	审核比例	批准比例
设计比例	设计比例	审核比例	批准比例

Labour Requirements

- Labour - 150 - 200 - During Construction
- Labour - 358 - Phase 1 Operations
- Labour - 256 - Phase 2 Operations
- Labour - 260 - Phase 3 Operations
- TOTAL 874

The scope of staffing includes production personnel, management and service personnel in coal preparation unit, coking unit, Screening and coke transportation system, Coke Dry Quenching (CDQ) system (heat recovery), auxiliary production facilities

PROPOSED INFRASTRUCTURE

- Coke Plant - 3 000 000 tons/annum
- Heat Recovery Plant (110 MW))
- Access roads and Haul roads;
- Diesel storage tanks;
- Sewerage Treatment Facility
- Pollution Control Dams (PCDs);
- Berms to separate dirty/clean water;
- Ore Stockpiles - Coal, Coke;
- Topsoil storage dumps;
- 132 KV Sub-Station
- Offices and Living Area

Coke Plant

- Coal preparation plant - conveyor belts, vibrating screens and transfer stations
- 4 × 25-hole 5.5-meter vertical heat recovery coke ovens with an annual production capacity of 1 million tons of coke, along with supporting waste heat power generation facilities - pure carbon product/Coke
- Coke screening plant - conveyor belts, vibrating screens and transfer stations 0-6mm, 6-13mm and >13mm
- Gas cleaning plant - air cooling tower for gas, electric coal tar catcher, gas blower, air blower, gas holder,
- Auxiliary production facilities - power supply, distribution system, pipelines, lab, plant offices, Water pump house

Capital Investment

- **Coke Plant – Approximately UDS800 Million – R13.6 Billion**
- **Heat Recovery Plant – Approximately USD400 Million – R6.8 Billion**

Heat Recovery Plant

- Waste heat recovery methods include capturing and transferring the waste heat from a process with a gas or liquid back to the system as an extra energy source. The energy source can be used to create additional heat or to generate electrical(110MW) and mechanical power.



Illustration of Coke Plant



Illustration - Heat Recovery Plant



EIA/EMP/IWULA/ PROCESS

- **Gudani Scope of Work:**
 - Conduct environmental baseline surveys;
 - Identification of impact and assessments thereof;
 - Formulation of impact management measures;
 - Consultation with authorities and stakeholders;
 - Conduct public participation process as part of the EIA/EMP/IWULA/Waste/AEL Processes;
 - Compile the EIA/EMP/IWULA/Waste/AEL Reports and any supporting documentation which includes related engineering aspects.
 - Apply for the Required Authorizations and Approvals

AUTHORIZATIONS REQUIRED

- **NEMA - DFFE/LDEDET;**
- **WATER USE LICENSE & IWWMP - DWS;**
- **AIR EMISSIONS LICENSE - LDEDET;**
- **WASTE MANAGEMENT LICENSE - LDEDET;**
- **SAHRA PERMITS - SAHRA;**

ENVIRONMENTAL ASSESSMENT

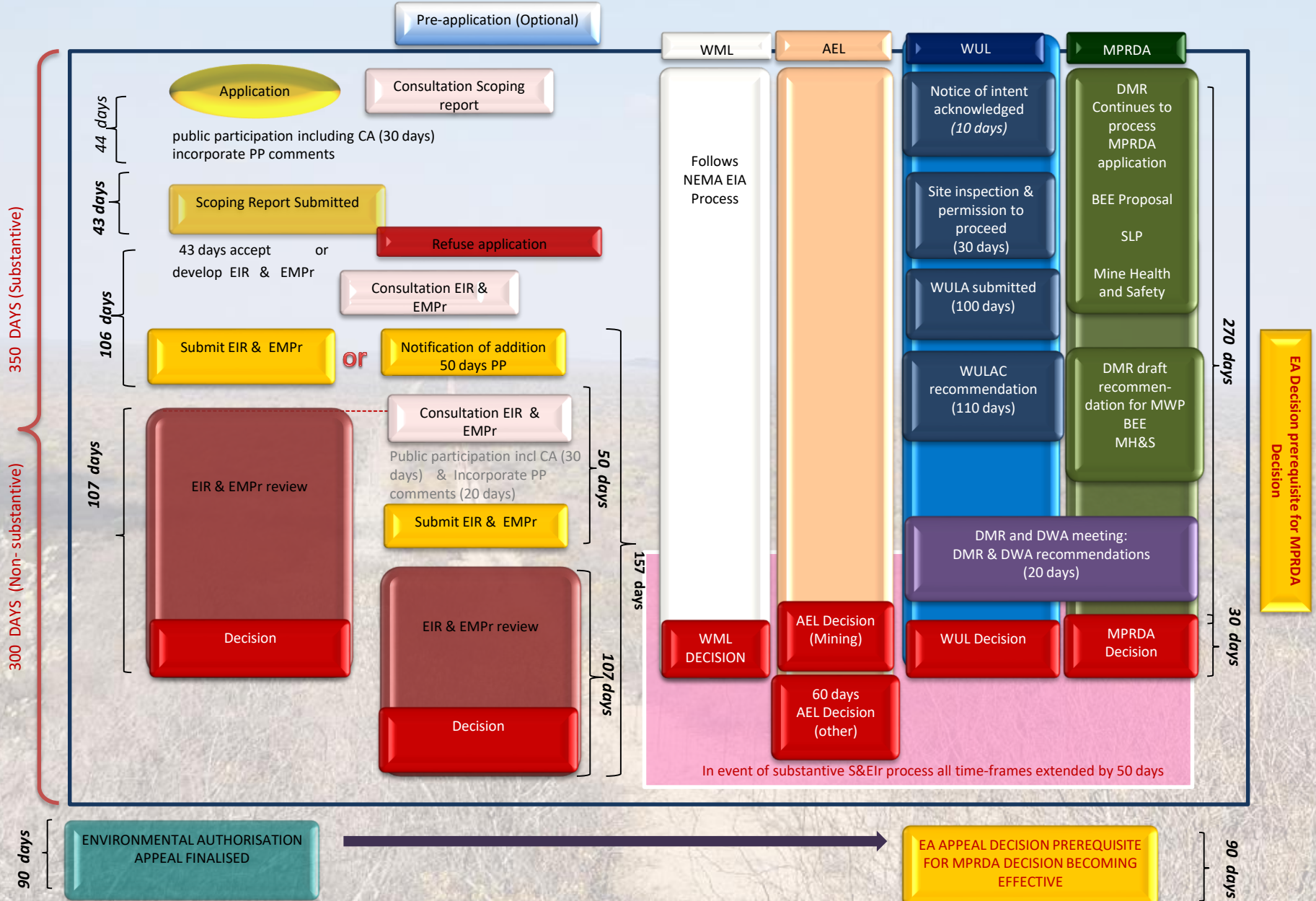
- TOPOGRAPHY
- SOILS AND LANDUSE
- BIO-DIVERSITY AND ECOLOGY
- FAUNA
- SURFACE WATER/WETLANDS/CATCHMENT
- GROUND WATER
- NOISE
- AIR QUALITY
- VISUAL IMPACTS
- HERITAGE IMPACTS
- SOCIO-ECONOMIC ISSUES
- WASTE MANAGEMENT

PUBLIC PARTICIPATION PROCESS

- **NEWS PAPER ADVERTS - 12 September 2025**
- **SITE NOTICES - 21 September 2025**
- **PUBLIC PARTICIPATION MEETINGS: -**
 - **09 July 2025 - MTC**
 - **06 and 22 August 2025 - MTC / Local Chiefs**
 - **27 September 2025 - Various Communities**
- **PUBLIC PARTICIPATION REPORT.**

S&EIR Process

MPRDA Application Accepted



KEY TASKS AND TIMELINES

KINETIC GROUP		SAEMB	TIMELINE
PROJECT KICK-OFF AND SITE VISIT			June 2025
REVIEW AVAILABLE DATA AND INFORMATION			June - July 2025
IDENTIFY LISTED ACTIVITIES	IDENTIFY LISTED ACTIVITIES		August 2025
IDENTIFY REQUIRED ENVIRONMENTAL APPROVALS	IDENTIFY REQUIRED ENVIRONMENTAL APPROVALS		August 2025
SITE VISITS TO PROJECT SITE			June - Aug 2025
CONSULT WITH RELEVANT AUTHORITIES			June - Aug 2025
INITIAL AND SCOPING PUBLIC PARTICIPATION - (KINETIC)			Aug/Sept 2025
IDENTIFY & CONDUCT SCOPING SPECIALIST STUDIES	IDENTIFY CONDUCT SCOPING SPECIALIST STUDIES		Jul/Aug 2025
SUBMIT EIA APPLICATION	SUBMIT EIA APPLICATION		End Sept 2025
SUBMIT WML APPLICATION	SUBMIT WML APPLICATION		End Sept 2025

KEY TASKS AND TIMELINES

KINETIC GROUP	SAEMB	TIMELINE
SUBMIT AEL APPLICATION	SUBMIT AEL APPLICATION	Dec 2025
SUBMIT WUL APPLICATION	SUBMIT WUL APPLICATION	Oct 2025
COMPILE SCOPING REPORT	COMPILE SCOPING REPORTS	Aug/Sept 2025
SUBMIT SCOPING REPORT & PUBLIC REVIEW (30 Day)	SUBMIT SCOPING REPORT & PUBLIC REVIEW (30 Day)	Sept/Oct 2025
CONDUCT EIA/IWULA/AEL/WML SPECIALIST STUDIES AND REPORTS -		Aug - Nov 2025
COMPILE EIA/IWULA/WML REPORTS	COMPILE EIA/IWULA/AEL/WML REPORTS	Aug - Nov 2025
PUBLIC PARTICIPATION - (KINETIC)		Nov 2025
SUBMIT EIA/IWULA/WML REPORTS	SUBMIT EIA/IWULA/AEL/WML REPORTS	Dec 2025
AUTHORITY REVIEW AND EVALUATIONS	AUTHORITY REVIEW AND EVALUATIONS	Dec 25 - Feb 2026
EA EXPECTED	EA EXPECTED	Apr/May 2026

QUESTIONS AND CLARITY !!

Contacts:

Tel: 082 8283412

Fax: 086 235 9820

setenane@gudaniconsulting.co.za

mulanga@gudaniconsulting.co.za